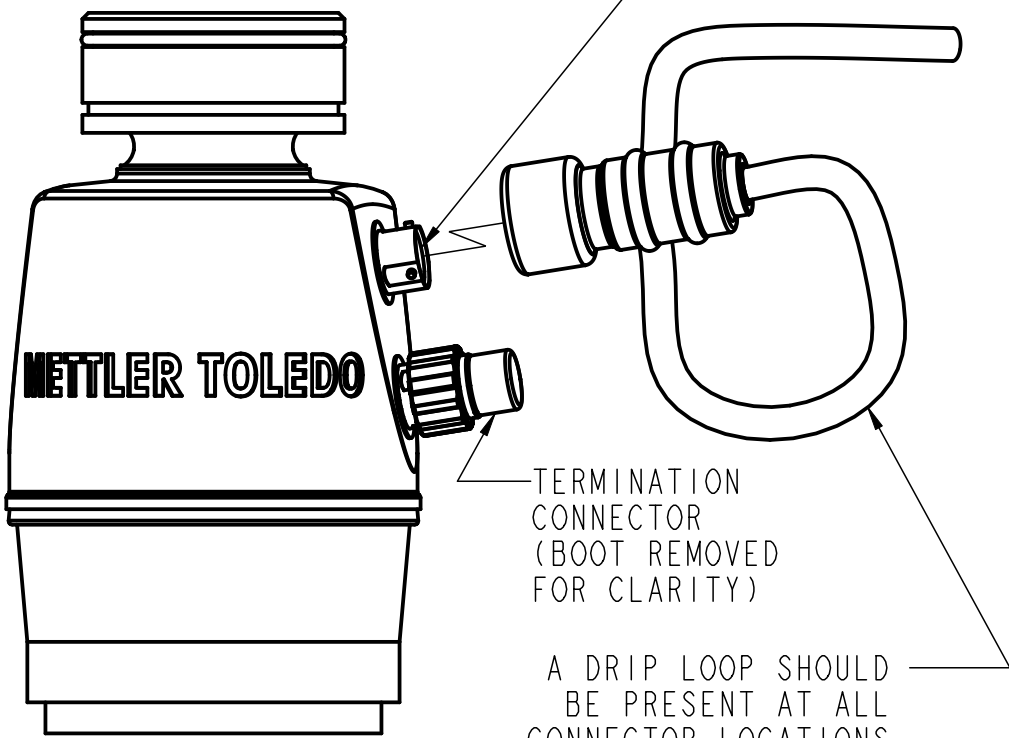


FOR DETAILED WIRING INFORMATION AND HOME RUN CABLE PREPARATION, PLEASE REFER TO YOUR TERMINAL'S TECHNICAL MANUAL.

WIRING NOTE:

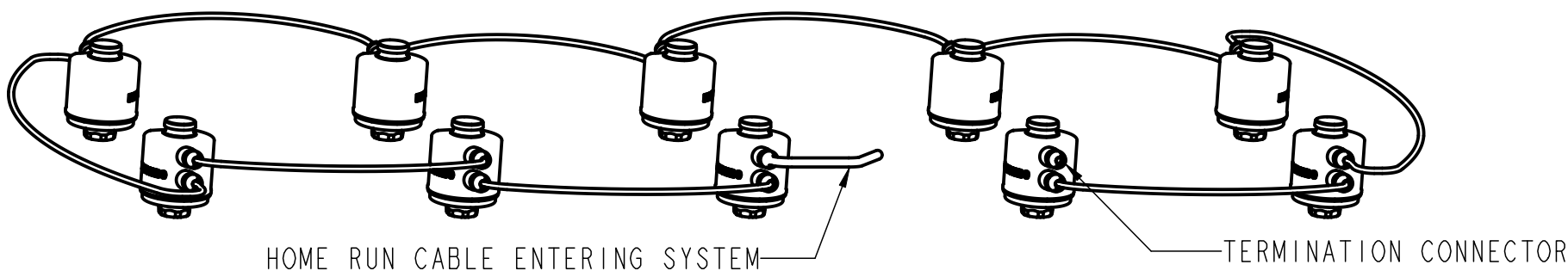
INTERTWINE THE INNER DRAIN WIRE, GREEN WIRE, AND GROUND WIRE TOGETHER. THE WIRE ENDS ARE STRIPPED, TWISTED TOGETHER, AND CRIMPED TOGETHER INTO A SINGLE RING TERMINAL. THE RING TERMINAL IS ATTACHED TO THE GROUND STUD LOCATED INSIDE THE TERMINAL ENCLOSURE. A SEPERATE PIECE OF GROUND WIRE WITH A RING TERMINAL IS ALSO ATTACHED TO THE SAME GROUND STUD WITH A HEX NUT.

IF CONNECTORS BECOMES CONTAMINATED CLEAN WITH SOLVENT SPRAY. ORIENT CONNECTORS TO PREVENT CONTACT WITH THE SCALE STRUCTURE.

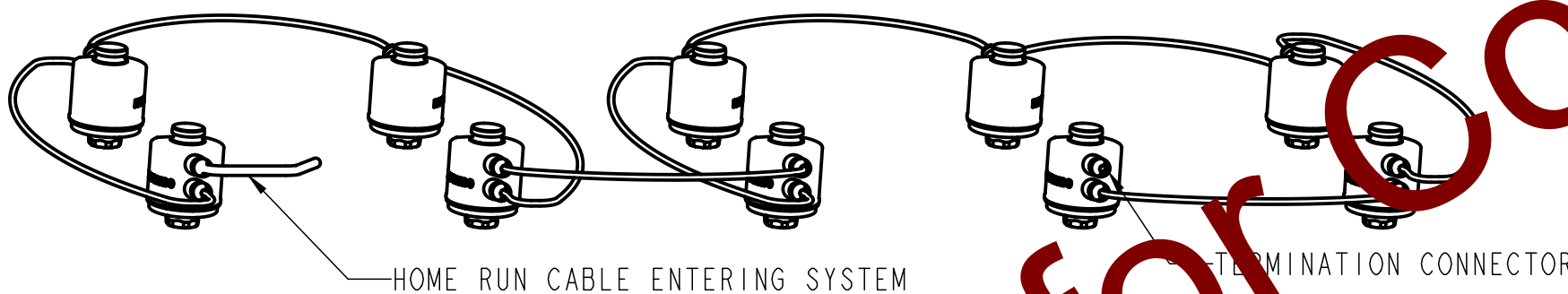


NO SPECIFIC ORIENTATION REQUIRED FOR TOP AND BOTTOM CONNECTORS.

POWERCELL PDX CONNECTION DETAIL



STANDARD LOAD CELL CABLE CONFIGURATION



MULTI-PLATFORM LOAD CELL CABLE CONFIGURATION

NOTES:
REFER TO THE DESIRED SCALE'S CABLE KIT FOR AN OVERVIEW OF CABLE LOCATIONS.

A COMPLETE WIRING DIAGRAM FOR A (10) LOAD CELL SYSTEM IS PROVIDED ABOVE. THIS DIAGRAM ILLUSTRATES TYPICAL CABLE CONNECTIONS: HOME RUN TO TERMINAL AND APPROPRIATE GROUNDING METHODS.

- HOME RUN CABLE MUST BE PURCHASED FROM METTLER TOLEDO. CABLES TO BE RUN IN DEDICATED CONDUIT, PREFERABLY STEEL.
- POWER FOR THE TERMINAL AND ANY ACCESSORIES MUST COME FROM THE AC TRANSIENT SURGE VOLTAGE PROTECTOR.
- IND780 TERMINAL OPERATES FROM 100 TO 240 VAC, 49 TO 61 Hz. EXTERNAL POWER SUPPLY IS REQUIRED FOR SPECIFIC COMBINATIONS OF NUMBER OF LOAD CELLS AND HOME RUN CABLE LENGTH. SEE MANUAL FOR COMPLETE DETAILS.
- EXTERNAL POWER SUPPLY 68001984 IS COMPATIBLE WITH AC SERVICE FROM 100 TO 250 VAC, 47 TO 63 Hz.
- FOR APPLICATIONS IN EUROPE, USE THE FOLLOWING 24V POWER SUPPLY: 72154679, 24V 2.75A POWER SUPPLY.
- IND560 TERMINAL OPERATES FROM 85-264 VAC, 49-61 Hz. AN EXTERNAL POWER SUPPLY IS NOT COMPATIBLE WITH THIS TERMINAL IN A POWERCELL PDX SYSTEM.
- GROUND ROD TO BE DRIVEN MINIMUM 8" VERTICALLY INTO SOIL.
- CABLE INFORMATION IS AS FOLLOWS:

HOME RUN CABLE AND LOAD CELL CABLE BOOT DIAMETER: 1.14" (29mm)
HOME RUN CABLE AND LOAD CELL CABLE DIAMETER: 0.34" (8.7mm)
HOME RUN CABLE AND LOAD CELL CABLE BEND RADIUS: 2.00" MIN (50mm)

- REFERENCE SHEET 2 FOR WIRING DETAILS.

LPO KIT	APPLICATION
61043832 61043833	240V I-HOME RUN, IND780 WITH MORE THAN 12 CELLS 240V I-HOME RUN, EXPORT, 61043832 WITHOUT GROUND ROD
61043830 61043830 61043831	240V I-HOME RUN, IND560/IND570 WITH 14 CELLS AND WITH 300M** MAX HR CABLE 240V I-HOME RUN, IND780 WITH <=12 CELLS AND WITH 120M** MAX HR CABLE 240V I-HOME RUN, EXPORT, 61043830 WITHOUT GROUND ROD
61043828 61043829	120V I-HOME RUN, IND780 WITH MORE THAN 12 CELLS 120V I-HOME RUN, EXPORT, 61043828 WITHOUT GROUND ROD
61043826 61043826 61043827	120V I-HOME RUN, IND560/IND570 14 CELLS AND WITH 300M** MAX HR CABLE 120V I-HOME RUN, IND780 WITH <=12 CELLS AND WITH 120M** MAX HR CABLE 120V I-HOME RUN, EXPORT, 61043826 WITHOUT GROUND ROD

**CONSULT METTLER TOLEDO OR YOUR TERMINAL MANUAL FOR COMPLETE DETAILS.

QTY/LPO KIT										
ITEM	61043833	61043832	61043831	61043830	61043829	61043828	61043827	61043826	PART NUMBER	DESCRIPTION
1	-	-	-	-	1	1	1	1	68004219	SURGE PROTECTOR, 120V
1	1	1	1	1	-	-	-	-	61045754	SURGE PROTECTOR, 230V
2	-	1	-	1	-	1	-	1	69031747	GROUND ROD, 10'
3	1	1	1	1	1	1	1	1	61038442	GROUND ROD CLAMP
4	1	1	1	1	1	1	1	1	61070011	CONDUIT GROUNDING CLAMP
5	1	1	1	1	1	1	1	1	68002800	GROUND LUG
6	4	4	4	4	4	4	4	4	61072621	RING TERMINAL, 14-16 GA
7	50'	50'	50'	50'	50'	50'	50'	50'	69033707	1/2 FLAT BRAIDED CABLE
8	-	-	-	-	1	1	1	1	68004106	MULTIPLE OUTLET STRIP 120V (NOT SHOWN)
9	1	1	1	-	1	1	-	-	68001984	EXTERNAL POWER SUPPLY
10	1**	1	-	-	1	1	-	-	68002184	POWER CORD, IEC320-NORTH AMERICA
11	1	1	-	-	1	1	-	-	68002917	CORD GRIP
12	1	1	1	1	1	1	1	1	30092799	CLAMP BAND HOSE #4 SS
13	-	-	-	-	-	-	-	-	30429299	EXTERNAL POWER SUPPLY (ACM780)

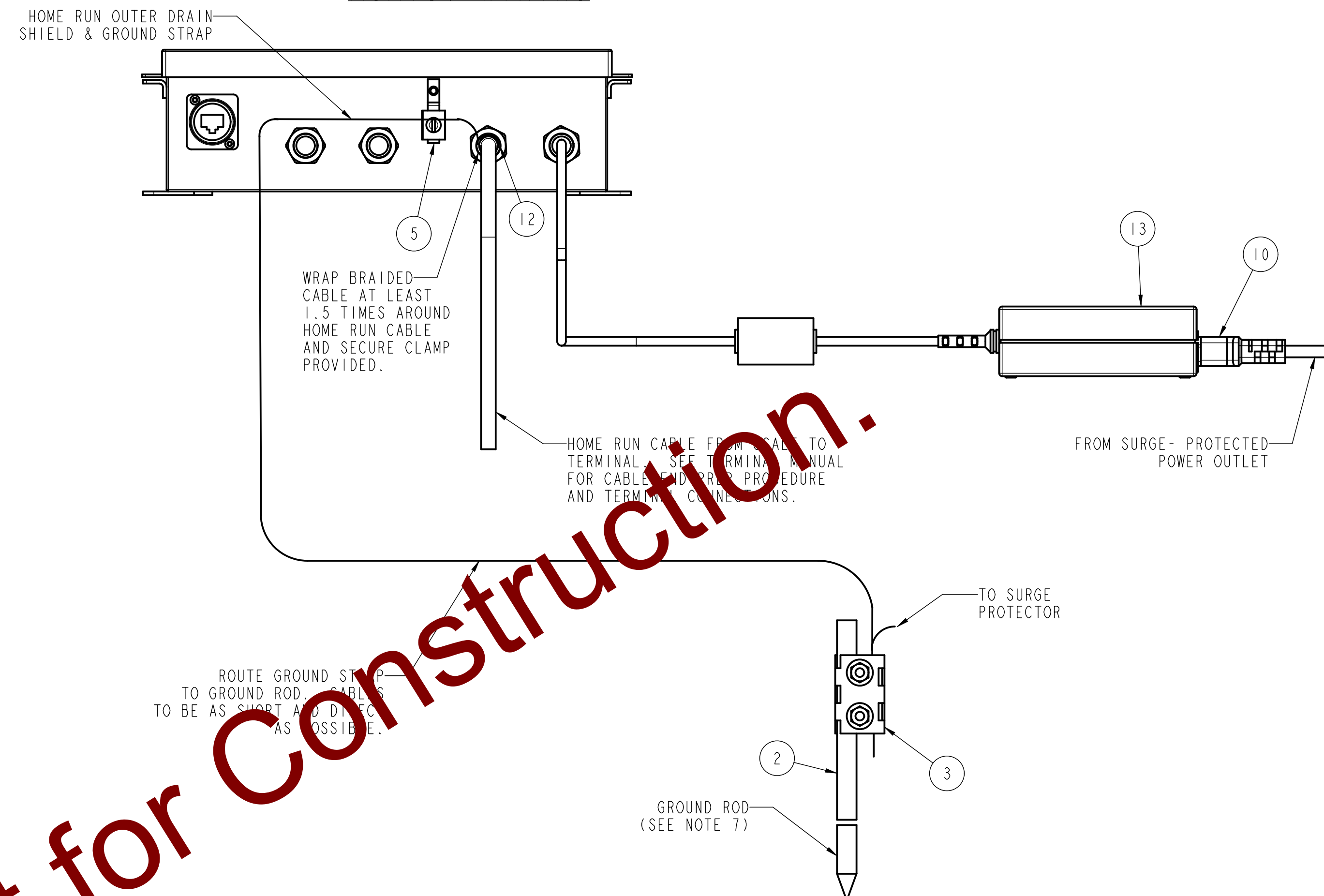
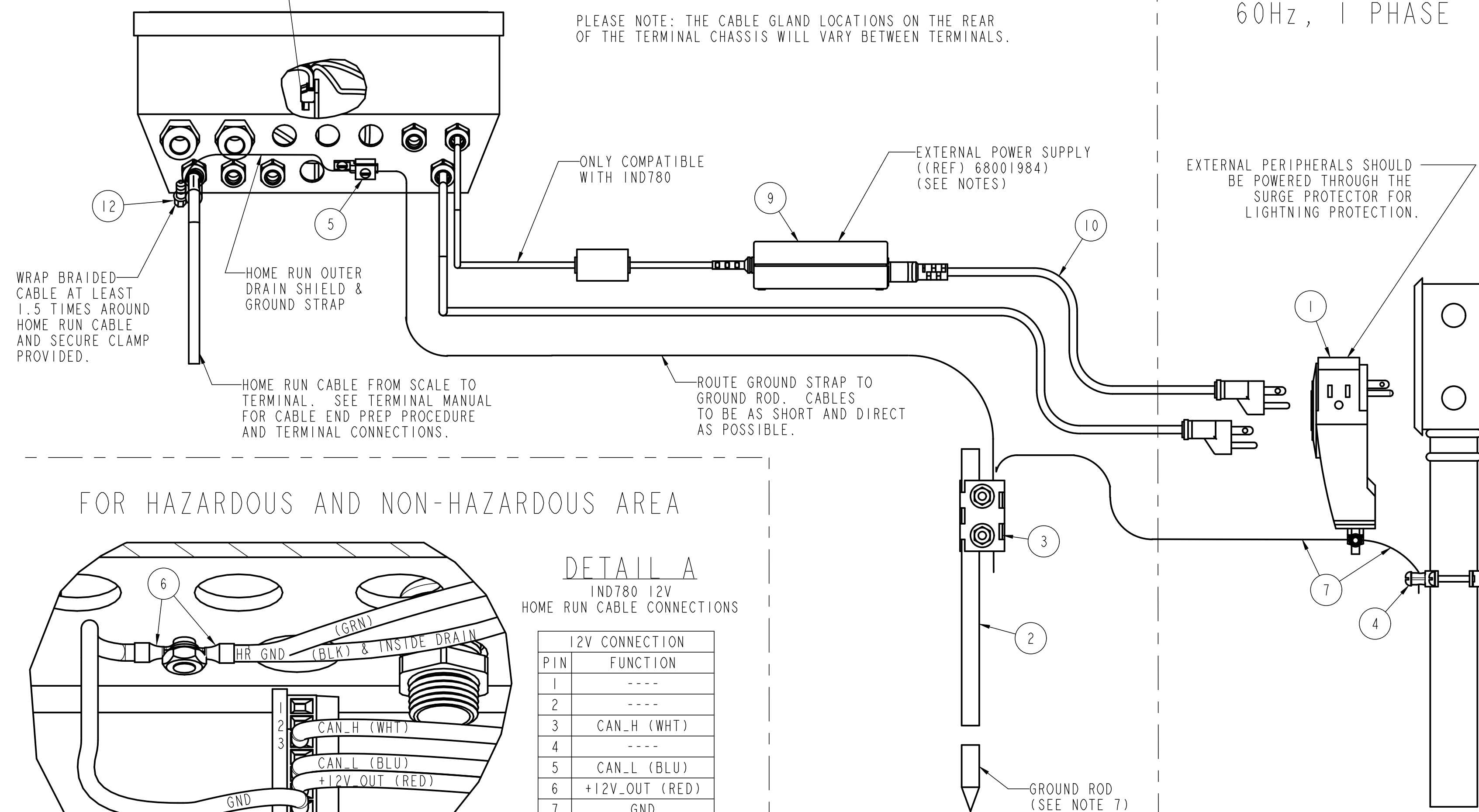
** SUPPLIED AS STANDARD, OTHER INTERNATIONAL CORDS MUST BE ORDERED SEPARATELY.

REV	CHANGE	BY	DATE	SCALE	NONE	METTLER TOLEDO	
D	REMOVED DIELECTRIC COMPOUND REFERENCE	ADF	08/17/10	DATE	05/01/09		
E	UPDATED NOTES & DETAILS FOR THIN HR CABLE	ADF	12/14/10	DRN	KRS APPD ADF	TITLE POWERCELL PDX STANDARD WIRING DIAGRAM AND LIGHTNING PROTECTION (LPO) - SHEET 1 OF 2	
F	ADDED DRAWING FOR SURGE PROTECTOR TA100899	KRS	8/08/11	UNLESS OTHERWISE SPECIFIED, ALL DIMENSIONS ARE IN INCHES, AND DIMENSIONAL TOLERANCES ARE: FRACTIONAL DECIMAL ANGULAR X ± .1 X ± .1° ±1/16 .XX ± .02 .X ± .5° .XXX ± .005			
G	ADDED 30092799 AND N109 (WAS TC100884)	KRS	07/18/13	THIS PRINT IS FURNISHED WITH THE UNDERSTANDING THAT THE ESSENCE THEREOF WILL NOT BE REPRODUCED IN WHOLE OR IN PART WITHOUT WRITTEN AUTHORIZATION OF METTLER-TOLEDO, LLC. ALL DESIGNS ARE THE PROPERTY OF METTLER-TOLEDO, LLC. AND WILL BE PROTECTED BY PATENTS.			61802471
H	ITEM 68001984 WAS 64083049	KRS	01/16/14	REV			
I	ADDED IND246 TO DETAIL C, REMOVED CONNECTOR	ADF	11/17/14	L			
J	ADDED ACM780 AND MOVED VIEWS TO SHEET 2	NLD	11/10/17				
K	ADDED IND570 TO LPO KIT TABLE	NLD	02/27/18				
L	FIXED REV, GRAPHICS, ADDED DETAILS: A,B,C	NLD	02/28/18				

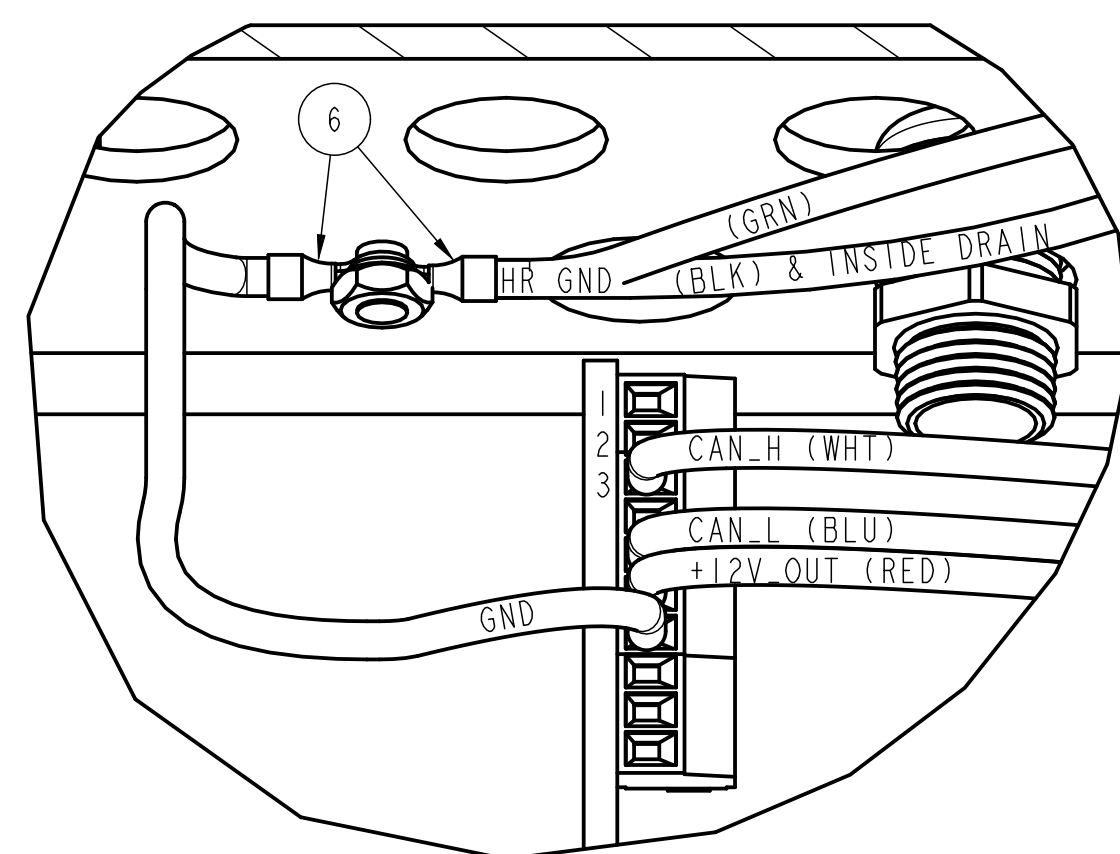
IND246, IND560, IND570 & IND780 WIRING

110/120 VAC SERVICE
60Hz, 1 PHASE

ACM780 WIRING



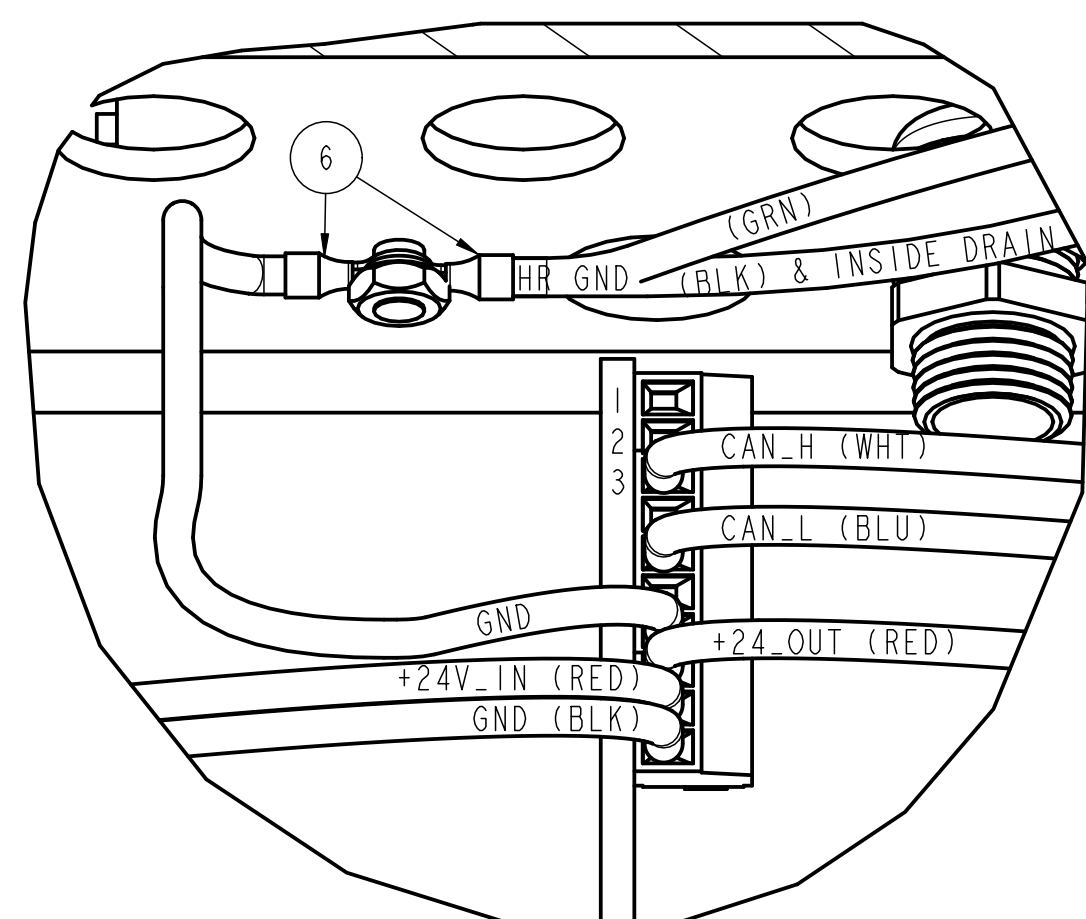
FOR HAZARDOUS AND NON-HAZARDOUS AREA



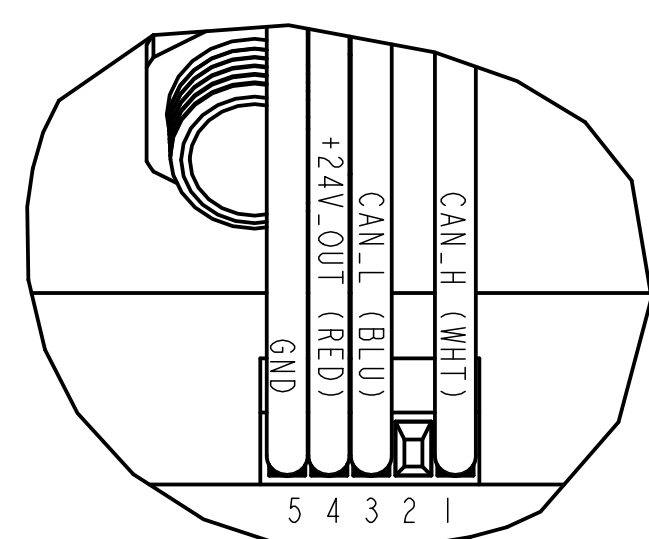
DETAIL A
IND780 12V
HOME RUN CABLE CONNECTIONS

12V CONNECTION	
PIN	FUNCTION
1	----
2	----
3	CAN_H (WHT)
4	----
5	CAN_L (BLU)
6	+12V_OUT (RED)
7	GND
8	----
9	----
10	----

FOR NON-HAZARDOUS AREA ONLY



NOTE: WHEN USING THE 24V POWER SUPPLY, THE RED WIRE FROM THE HOME RUN CABLE SHOULD BE MOVED FROM THE 12V_OUT TO THE +24V_OUT LOCATION.



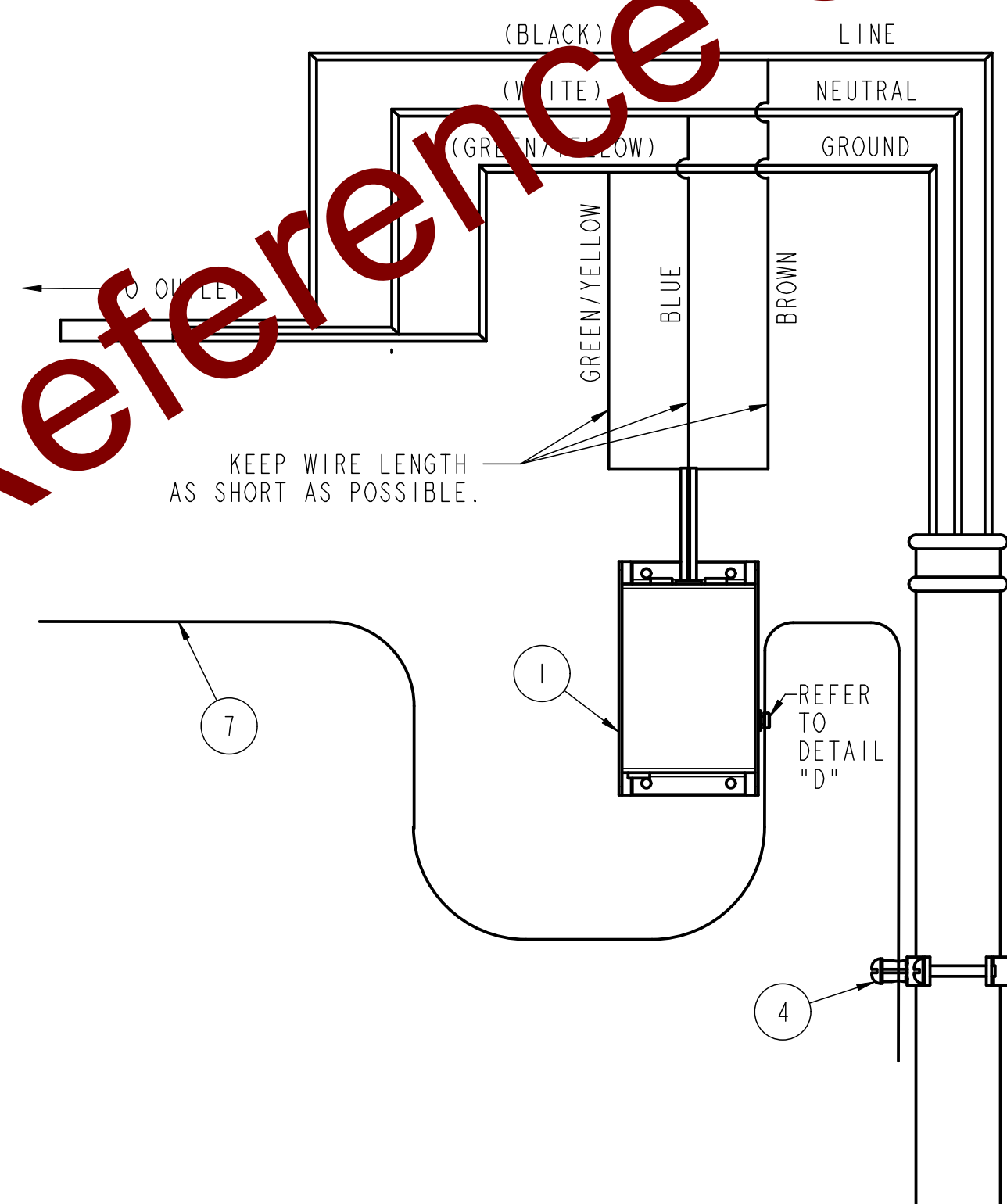
DETAIL C

IND560/IND570 AND IND246 PDX 24V
HOME RUN CABLE CONNECTIONS

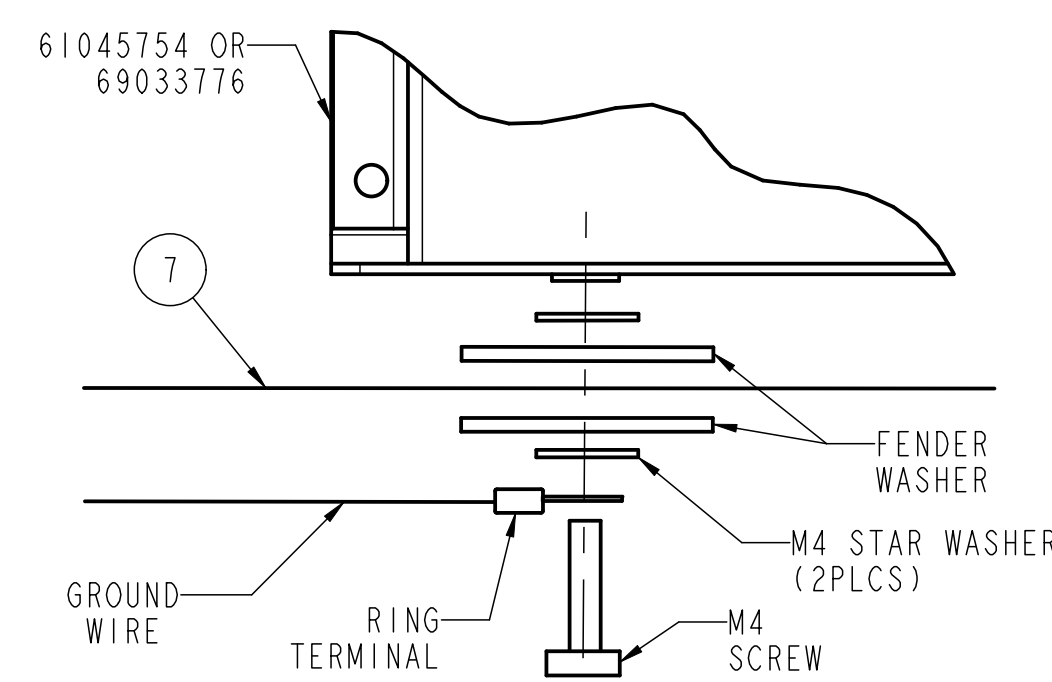
24V CONNECTION	
PIN	FUNCTION
1	CAN_H (WHT)
2	---
3	CAN_L (BLU)
4	+24V_OUT (RED)
5	GND

NOTE: SEE ABOVE DIAGRAM FOR HOME RUN CABLE GROUND WIRE CONNECTION AT GROUND STUD.

220/240 VAC SERVICE
50/60Hz, 1 PHASE
FOR SURGE PROTECTOR 60053176
(OBSOLETE VERSION)



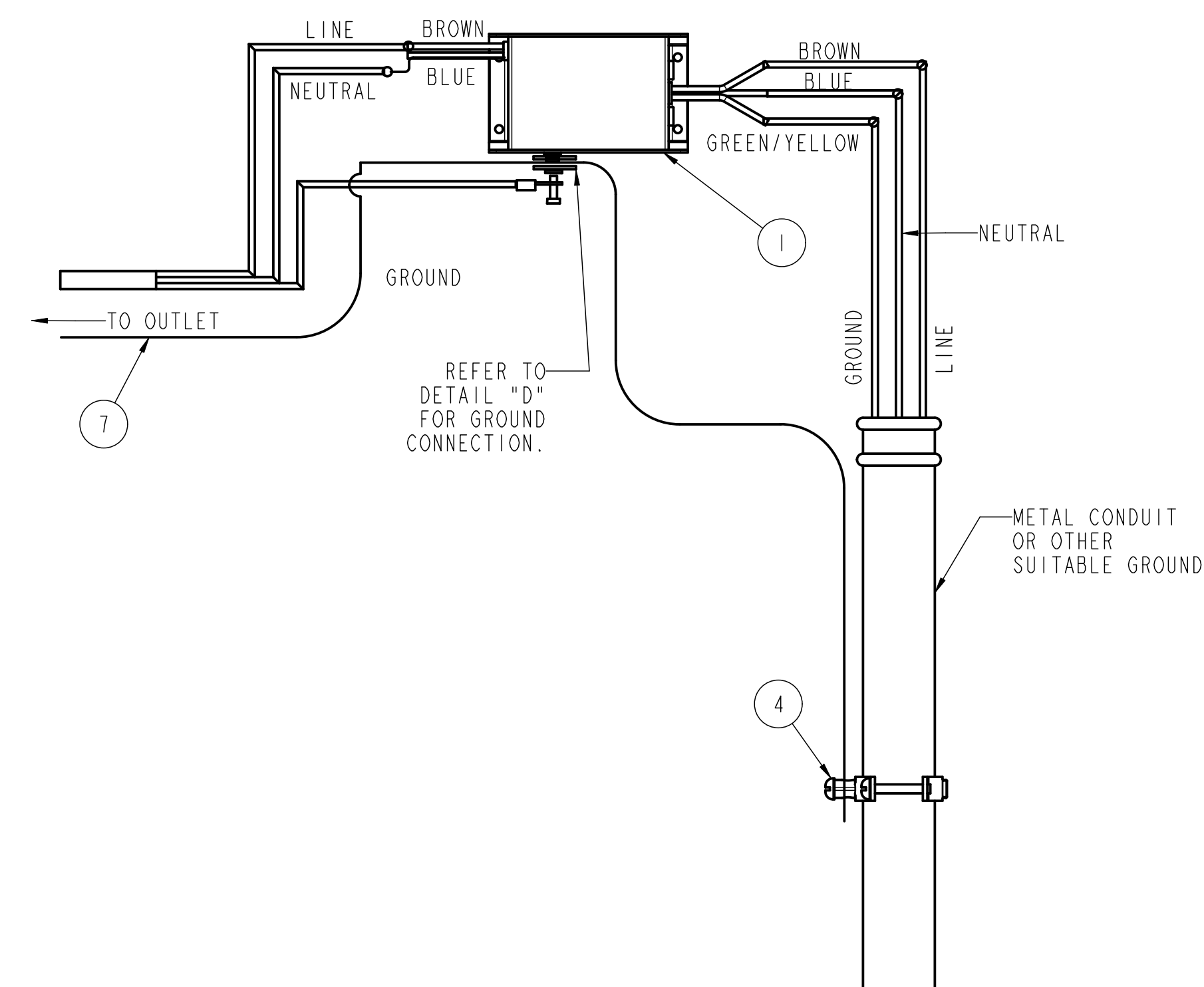
DETAIL "D"



NOTES:

1. REFERENCE SHEET 1 FOR GENERAL NOTES AND LPO KIT AND BILL OF MATERIALS.

220/240 VAC SERVICE
50/60Hz, 1 PHASE
FOR SURGE PROTECTOR 61045754



REV	CHANGE	BY	DATE	SCALE	NONE	<div>METTLER TOLEDO</div>
D	REMOVED DIELECTRIC COMPOUND REFERENCE	ADF	08/17/10	DATE	05/01/09	
E	UPDATED NOTES & DETAILS FOR THIN HR CABLE	ADF	12/14/10	DEN	KRS APPD ADF	
F	ADDED DRAWING FOR SURGE PROTECTOR TAI00899	KRS	8/08/11	TITLE POWERCELL PDX STANDARD WIRING DIAGRAM AND LIGHTNING PROTECTION (LPO) - SHEET 2 OF 2		
G	ADDED 30097299S AND N109 (WAS TC100864)	KRS	07/18/13			
H	ITEM 68001984 WAS 64083049	KRS	01/16/14	UNLESS OTHERWISE SPECIFIED, ALL DIMENSIONS ARE IN INCHES, AND DIMENSIONAL TOLERANCES ARE:		
I	ADDED IND246 TO DETAIL C, REMOVED CONNECTOR	ADF	11/17/14	FRACTIONAL DECIMAL ANGULAR ±1/16 x ±.1 x ±.5 xx ±.1 x ±.5 xxx ±.005		
J	ADDED ACM780 AND MOVED VIEWS TO SHEET 2	ADF	11/10/17			
K	ADDED INDG570 TO LPO KIT TABLE	NLD	02/27/18			
L	FIXED REV. INDG570, ADDED DETAILS: A,B,C	NLD	02/27/18	61802471		